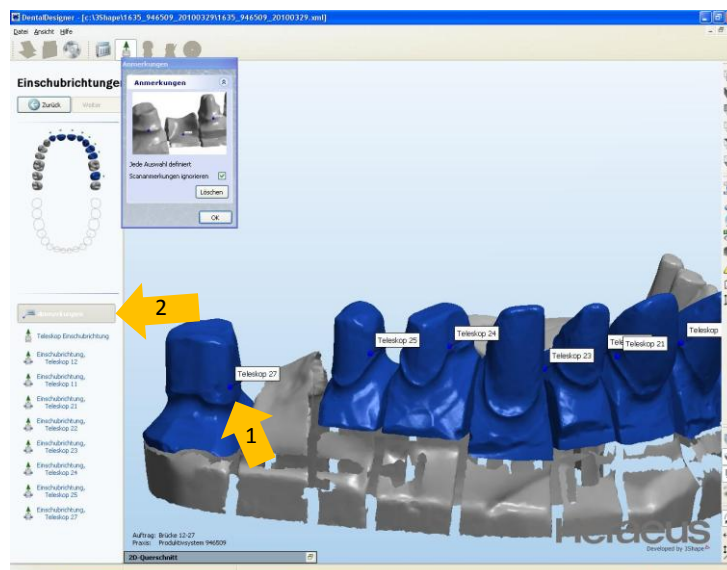


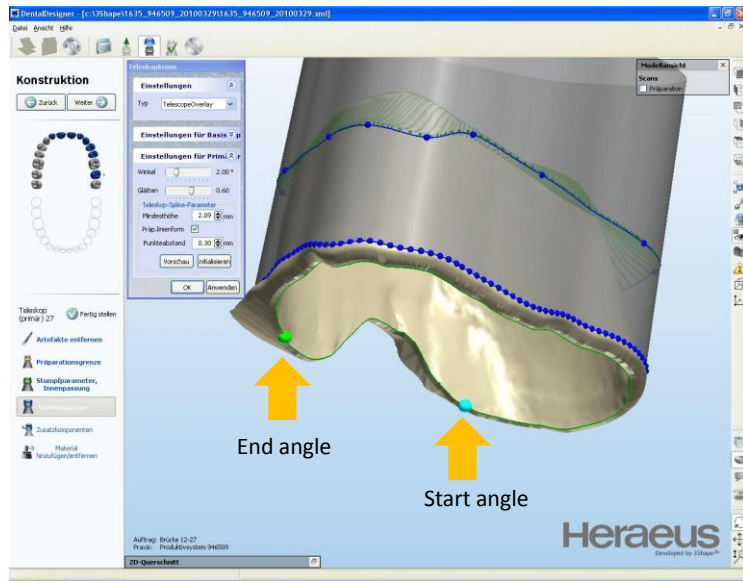
▶ Tips for creating telescopes

When creating telescopes, observe the following points:

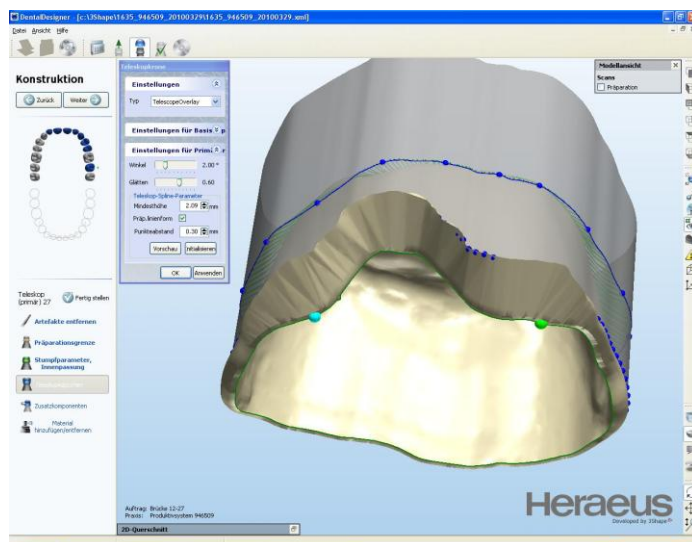
- Use the lingual band to strengthen the crown wall in a subsection in cases of large divergence in the path of insertion. The start and end angles of the lingual band are defined by the position of the blue dot (1) relative to the mark on the die in the notes (2).
- The surface of the telescope around the milled surface becomes smoother if the distance between the dots is set to 0.30 mm in the settings for primary crowns.

▶ Lingual band

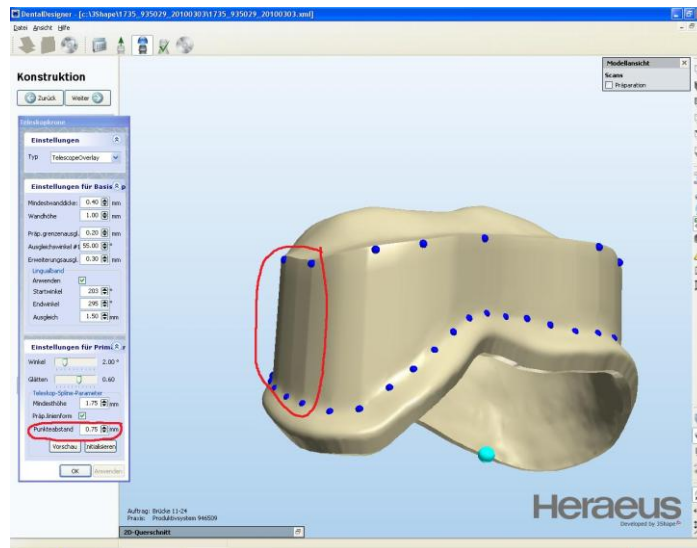




▶ Completed lingual band



► Unfavourable surface around the milled surface



► Favourable surface around the milled surface

